



Trusted Air Handling Experts

Envent was founded in Ontario with the objective to provide high-quality air handling solutions in the commercial and industrial HVAC marketplace.

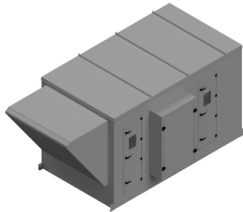
Envent focuses on providing air handling units that have the flexibility to meet each individual project's requirements, from large to small. Envent has been known for providing industry-leading gas-fired equipment but is also strong with hydronic or hybrid heating and cooling solutions. As well, Envent is capable of increasing the efficiency of your project through the application of energy and heat recovery technologies (wheel, plate and regenerative core).

Behind all of this is an engineering team with decades of combined real world experience. Our team strives to support our consulting engineers and contracting customers with knowledge-based solutions to provide the right fit, at the right cost.



Custom Engineered HVAC Solutions

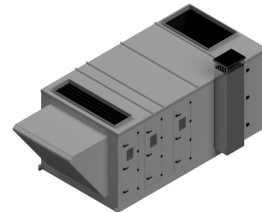
Event air handling units are categorized as follows:



EVD-Series

(Direct Gas Fired Burner)

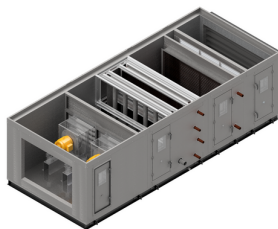
- Airflow range: 1,600 to 100,000 CFM
- Heating capacity range: 115 to 10,000 MBH
- Up to 25:1 turndown heating ratio



EDT Series

(Indirect, Drum & Tube Heat Exchanger)

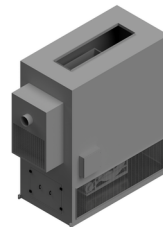
- Airflow range: 1,600 to 50,000 CFM
- Heating capacity range: 160 to 6,000 MBH
- Up to 30:1 turndown heating ratio
- Standard and high efficiency burners available
- Stainless steel drum & tube heat exchanger



EAH Series

(Hydronic or Electric Heating)

- Airflow range: 1,500 to 120,000 CFM.
- Hydronic applications
- Electric applications



EVP & EVH Series

(Indirect, Tubular Heat Exchanger)

- Airflow range: 1,000-10,000
- Up to 24:1 turndown
- Tubular 409 SS heat exchanger
- Standard EVP and high-efficiency EVH burners available

Available Options for Envent

Unit Casing & Construction Options:

- Foam insulated panel (1", 2" & 3")
- Fiberglass insulated panel (2" & 4")
- Neoprene insulated panels
- Thermal break construction
- Single, side-by-side, and stacked air tunnels configuration
- Structural steel channel or formed galvanized channel base
- Galvanized, stainless steel, and aluminum construction options
- Solid and perforated liners
- Custom paint
- Service corridors, vestibules, and access platforms.



Cooling Options:

- Hydronic coils
- DX coil with a remote condenser
- Packaged air-cooled DX condenser
- Packaged water-cooled DX condenser
- Heat pump
- Evaporative media
- Dehumidification (desiccant and condenser reheat)
- Digital and inverter scroll compressors
- Integral VRF air source heat pump

Heat/Energy Recovery Options:

- 90% efficient mass-energy transfer
- Heat wheels
- High-efficiency enthalpy core heat exchanger
- Plate heat exchanger
- Heat pipe systems
- Run-around coil loops

Available Options for Envent

Electrical and Controls:

- ETL Certified electrical panels
- DDC or stand alone controls
- BACnet, Modbus, or Lonworks control available
- Lights and receptacles
- VFDs

Fans and Motors Options:

- Belt and direct drive fans
- ODP, TEFC and U-frame motors
- Integrated airflow measuring station
- Seismic 1" or 2" deflection spring isolation
- Inertia bases



Other Options:

- Humidification
- Sound reduction
- Fan array
- Motor removal I-beam
- Cartridge, bag, and HEPA filters
- UV & ionic air purification
- Air blenders
- Knock-down construction
- Service corridors, vestibules, and platforms

Factory Testing Capabilities:

- Casing air leakage testing
- In-house or third-party acoustic testing
- Panel deflection testing

Contact O'Dell Associates, our exclusive representatives